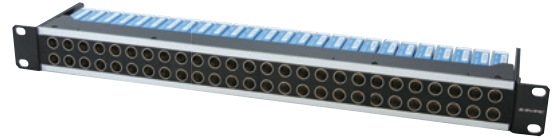


75Ω Video Patchbays

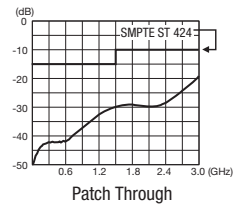
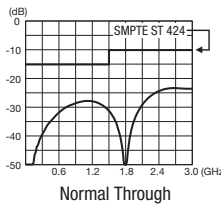
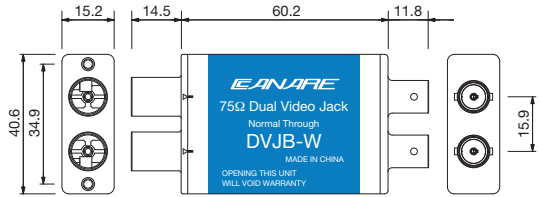
3G-ready HD-SDI video patchbays featuring Canare's uniquely-developed rotary switches.

| Model | Panel Size | Loaded Video Jacks |
|----------|------------|--------------------|
| 20DV | 1RU | 20 x DVJB-W |
| 20DVS | 1RU | 20 x DVJB-S |
| 20DV-2U | 2RU | 20 x DVJB-W |
| 20DVS-2U | 2RU | 20 x DVJB-S |
| 24DV | 1RU | 24 x DVJB-W |
| 24DVS | 1RU | 24 x DVJB-S |
| 24DV-2U | 2RU | 24 x DVJB-W |
| 24DVS-2U | 2RU | 24 x DVJB-S |
| 26DV | 1RU | 26 x DVJB-W |
| 26DVS | 1RU | 26 x DVJB-S |
| 26DV-2U | 2RU | 26 x DVJB-W |
| 26DVS-2U | 2RU | 26 x DVJB-S |

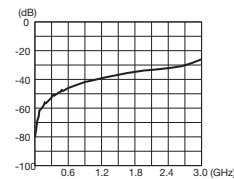
*Colors other than black are available on custom-made basis. (See page 69)



26DV



Return loss for DVJB-W



Isolation

75Ω Dual Video Jacks

| Model | Description |
|--------|--|
| DVJB-W | Normal Through |
| DVJB-S | Straight Through |
| VJ-DC | Dust Cap for Video Jack (color: black 40pcs) |

Key Features and Benefits

- Rotary switch has been improved for superior isolation.
- Also usable as digital audio patchbay.
- Can be recessed 25mm.
- Wide designation strip (2RU type).
- Lightweight aluminum alloy video jacks.

Return Loss & Isolation

| Model | Return Loss | | | Isolation |
|--------|-------------------------|---------------------------|---------------------------|--|
| | BNC-BNC: Normal Through | BNC-VIDEO: Patch Through | BNC-Self Termination | |
| DVJB-W | | 26dB or greater (~750MHz) | | 35dB or greater (~1.5GHz) 20dB or greater (~3.0GHz) |
| | | 20dB or greater (~2.4GHz) | | |
| | | 10dB or greater (~3.0GHz) | | |
| DVJB-S | N/A | 26dB or greater (~750MHz) | 26dB or greater (~750MHz) | 35dB or greater (~1.5GHz) 20dB or greater (~3.0GHz) |
| | | 20dB or greater (~2.4GHz) | 20dB or greater (~1.5GHz) | |
| | | 10dB or greater (~3.0GHz) | 10dB or greater (~3.0GHz) | |

Technical Note

Rotary Switch Technology and Signal Routing Chart

At the heart of the video jack is an independently-developed rotary switch which has been specially designed for use with high frequency signals. It features dual-contact construction for improved contact stability.



| W Series (Normal Through) | | | |
|---------------------------|--|----------------------------------|--|
| Video Port: No Patch | | BNC Port: Signal thru as Arrowed | Signal routes between top and bottom BNC without the use of Video plugs. |
| Video Port: Patch Upper | | BNC Port: Lower Terminated | Inserting a Video Patch Cord into front "upper" port automatically terminates signal path into the lower 75Ω load. |
| Video Port: Patch Lower | | BNC Port: Upper Terminated | Inserting a Video Patch Cord into front "lower" port automatically terminates signal path into the upper 75Ω load. |
| Video Port: Patch Both | | BNC Port: Signal thru as Arrowed | Inserting Video Patch Cords into both front ports inputs and/or outputs signal. |

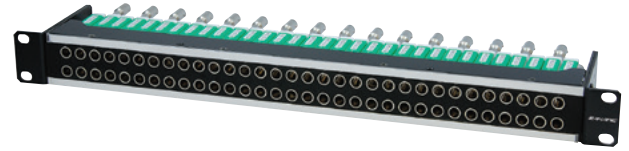
| S Series (Straight Through) | | | |
|-----------------------------|--|----------------------------------|--|
| Video Port: No Patch | | BNC Port: Both Signal Terminated | Two independent single jacks in a dual housing. |
| Video Port: Patch Upper | | BNC Port: Lower Terminated | Inserting a Video Patch Cord into front "upper" port automatically terminates signal path into the lower 75Ω load. |
| Video Port: Patch Lower | | BNC Port: Upper Terminated | Inserting a Video Patch Cord into front "lower" port automatically terminates signal path into the upper 75Ω load. |
| Video Port: Patch Both | | BNC Port: Signal thru as Arrowed | Inserting Video Patch Cords into both front ports inputs and/or outputs signal. |

75Ω Staggered Mid-size Video Patchbays

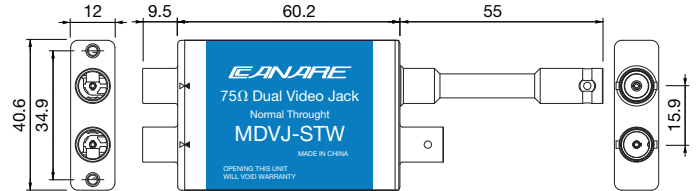
3G-ready mid-size video jacks allow for more efficient use of rack space.

| Model | Panel Size | Loaded Video Jacks |
|--------------|------------|--------------------|
| 32MD-ST | 1RU | 32 x MDVJ-STW |
| 32MD-ST-S | 1RU | 32 x MDVJ-ST-S |
| 32MD-ST-2U | 2RU | 32 x MDVJ-STW |
| 32MD-ST-S-2U | 2RU | 32 x MDVJ-ST-S |
| 32MD-ST-4U | 4RU | 96 x MDVJ-STW |
| 32MD-ST-S-4U | 4RU | 96 x MDVJ-ST-S |

*Colors other than black are available on custom model basis except 4RU type (See page 69).



32MD-ST-S

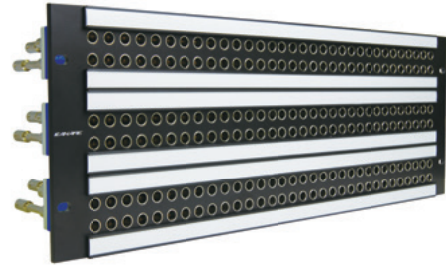


75Ω Staggered Mid-size Video Jacks

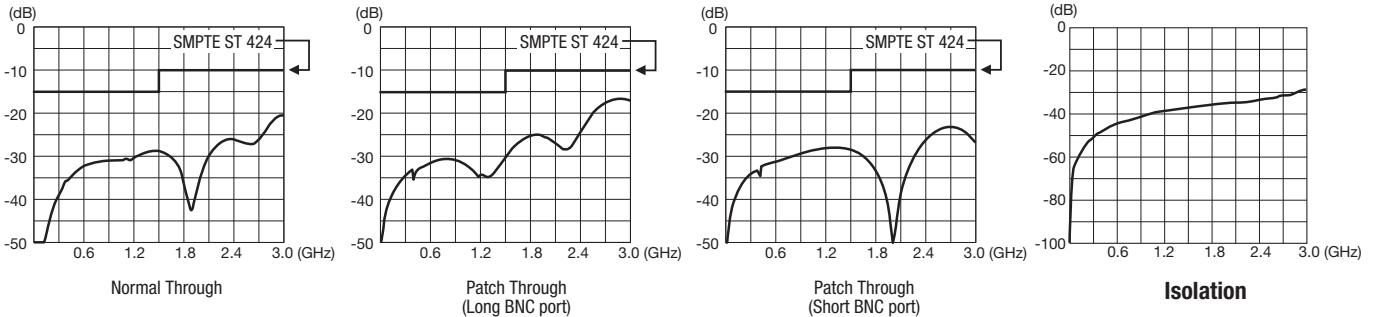
| Model | Description |
|-----------|---|
| MDVJ-STW | Staggered Mid-size Video Jack, Normal Through |
| MDVJ-ST-S | Staggered Mid-size Video Jack, Straight Through |
| MVJ-DC | Dust cap for Mid-size video Jack (color: black 40pcs) |

Key Features and Benefits

- 32 channels of I/O into 1RU or 2RU, 96 channels of I/O into 4RU.
 - Rotary switch has been improved for superior isolation.
 - Can be recessed 25mm (1RU, 2RU type).
 - Wide designation strip (2RU, 4RU type).
 - Lightweight aluminum alloy video jacks.
 - Industry standard BNC plugs can be used.
- Note :** Be sure to use with Mini-Weco video plug.



32MD-ST-4U



Return loss for MDVJ-STW

Return Loss & Isolation

| Model | Return Loss | | | Isolation |
|-----------|-------------------------|---------------------------|---------------------------|--|
| | BNC-BNC: Normal Through | BNC-VIDEO: Patch Through | BNC-Self Termination | |
| MDVJ-STW | | 26dB or greater (~750MHz) | | 35dB or greater (~1.5GHz) 20dB or greater (~3.0GHz) |
| | | 20dB or greater (~2.4GHz) | | |
| | | 10dB or greater (~3.0GHz) | | |
| MDVJ-ST-S | N/A | 26dB or greater (~750MHz) | 26dB or greater (~750MHz) | 35dB or greater (~1.5GHz) 20dB or greater (~3.0GHz) |
| | | 20dB or greater (~2.4GHz) | 20dB or greater (~1.5GHz) | |
| | | 10dB or greater (~3.0GHz) | 10dB or greater (~3.0GHz) | |